



MAP 15: BOTTOM OUT WALKTHROUGH if you need more help, visit the SM forum [HERE](#) or Download a PDF VERSION [HERE](#)

Map 15 Bottom Out. This level starts with zombies in and around holding cells, fight your way through them towards the other end of the floor. There you find a stair that leads you to the ground floor. Fight your way through some offices and a hallway that is blocked at the end with wooden plates. Break them in order to get through and go through the door at the end that leads you outside. Walk around the building and fight your way to the other side.



Climb down the ladder and open the door below, it leads to a small room where you find a keycard on the table. Go all the way to the keycard box that is attached to the wall and use the keycard to open the gate beside it. Behind the gate you find an elevator, walk towards it. When you get close to it the elevator will come down, kill the combine in it and use it to get to the top floor.



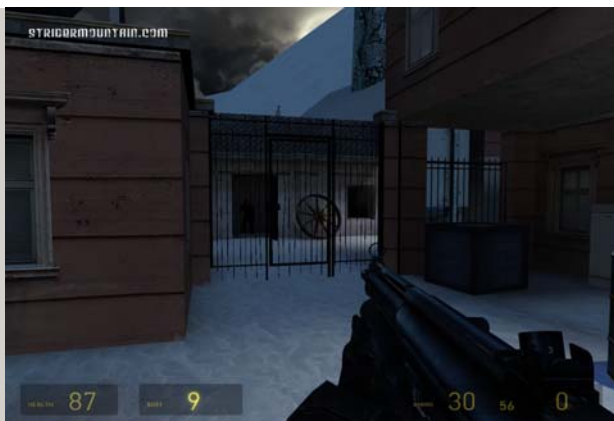
From here it's straight forward, fight your way towards the wooden stairs and use it. At the top all hell break loose and a truck will smash through a gate and try to kill you, jump a side and kill all combines around you.



Walk over the different catwalks to the other side, and climb the ladder that leads you to the upper floor. From here a stair leads you to the other side again were you find a small opening in the floor that is closed. Open in with the button attached to the wall and jump down into the hole.



Through a water basin you get to the other side of the mountain were you find two closed gates. Walk up towards the one in front of you when you get outside, ones you find out this one can't be opened walk back to the other closed gate that was at your right side.



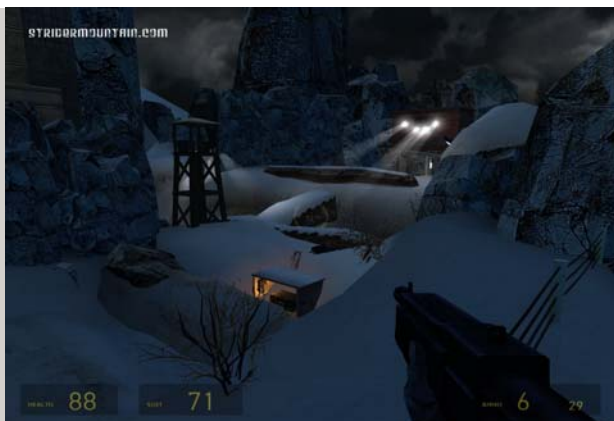
This one now opens and a combine attacks you, after killing him follow your way through the gate and inside another building. After killing some combines you get to a room with above you 2 combines shooting at you.



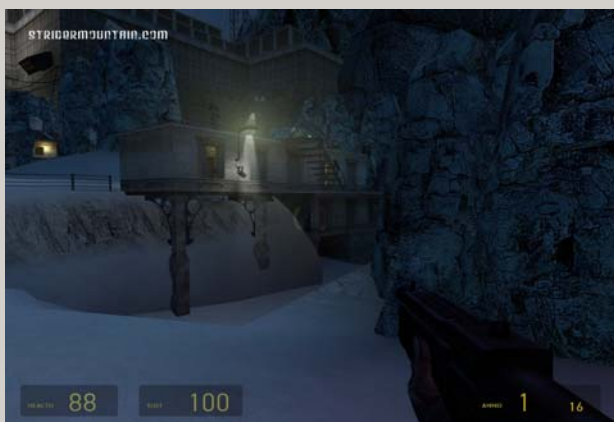
Use one of the barrels to climb/jump on to the upper floor where the 2 combine were standing. In the hallway behind the windows you find at the end a window that can be broken. Jump down through this window and use your sniper rifle to kill the combine in the watchtower.



At your right side you see a small stair that you have to climb up, be careful because a lot of combines are hiding behind a wall at the opposite side. It's quite effective to kill them with grenades while you take cover behind a rock. Be careful because while you approach them a combine sniper will start shooting at you from inside the small wooden building behind the combines.



Just in front of the small bridge that leads you to them you find extra health and a suit charger, For sure you will need it. Stay in cover while you take health and grenades from the ammo crate in front of you. With the grenades you have to take out the combine sniper before you can walk over the bridge. Under the wooden building in front of you you find a button that opens a small tunnel like vent shaft that leads you to the other side of the buildings. At one stage rockets will be fired at you and many combines do their best to kill you.



When you have killed all combines and passed the last building with rocket launcher on its roof, you will suddenly be shot at again by many combines in and on the small building that you just past and cleaned from any combine resistance. Seems there is some opening in the building where they all came out from.

EASTEREGG:

Go back to the building again and kill all of them again, somewhere in the building beside the stairs you now find that a metal door is open that was closed and locked before.



Go through the opened door and use the small open elevator. Below you will find another door that leads to the underground computer room that is full with steam/smoke. Walk around the console to the backside of the room, behind a small wall. There you find a red button attached to the wall, press it and the elevator will bring you one level down. Crouch back towards the other end around the consoles again, here you find the Data download place, press on the red button that you can find on the console and wait till you downloaded all data. Now go back the way you came until you are above floor and outside the building again, and follow your way towards the wooden gate at the end.



Open it and fight ones more with the combines above you on the catwalk. Ones you have killed them all you can take the jeep that can be found there and drive down the mountain road.

MAP 15: BOTTOM OUT WALKTHROUGH if you need more help, visit the SM forum [HERE](#) or Download a PDF version [HERE](#)

[BACK to TOP](#)

[WALKTHROUGH HOME](#)

Copyright 2007-2010 © stridermountain.com | powered by balticforever.com